



X SERIES

MODULAR AIR-HANDLING UNITS

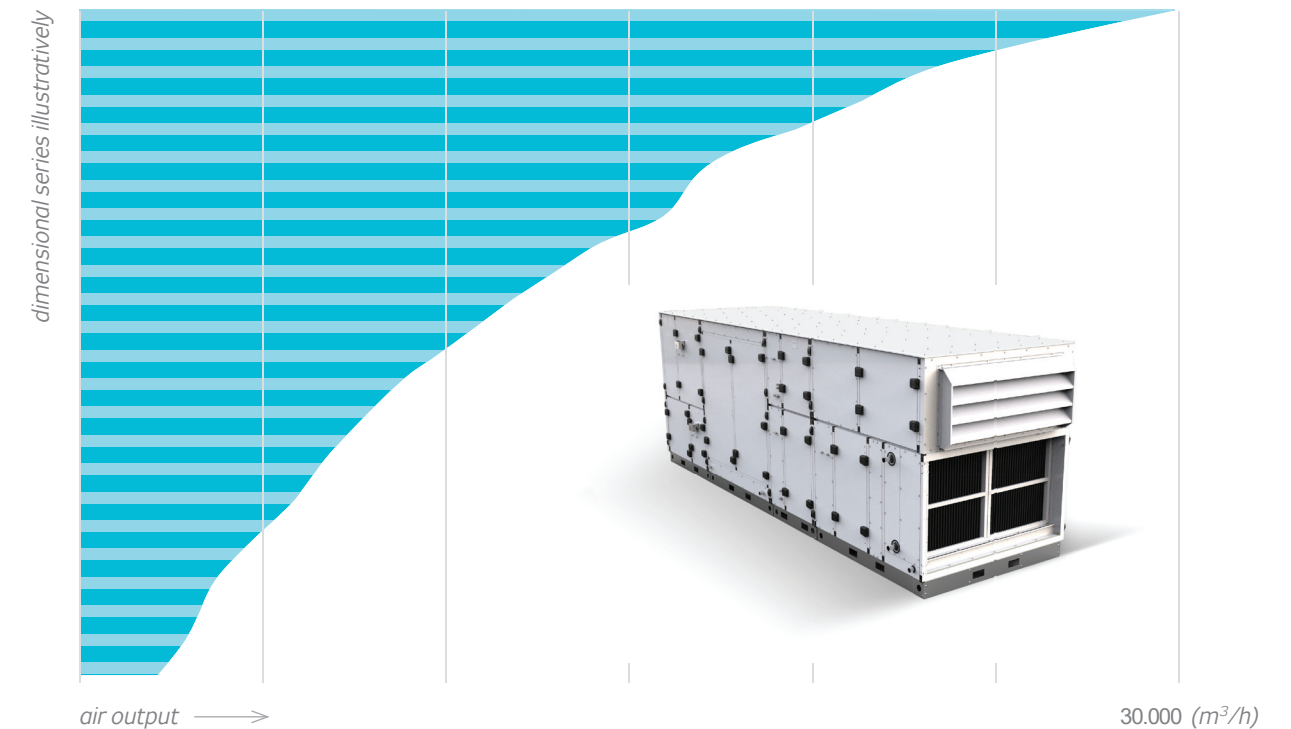
THEY CAN FIT INTO ANY BUILDING

The new AHU Remak **X series** can fit into every building – thanks to a combination of cross-sections with the air-flow from **1.000** to **30.000** m³/h, the dismountable **frameless** construction and the **custom made length**.

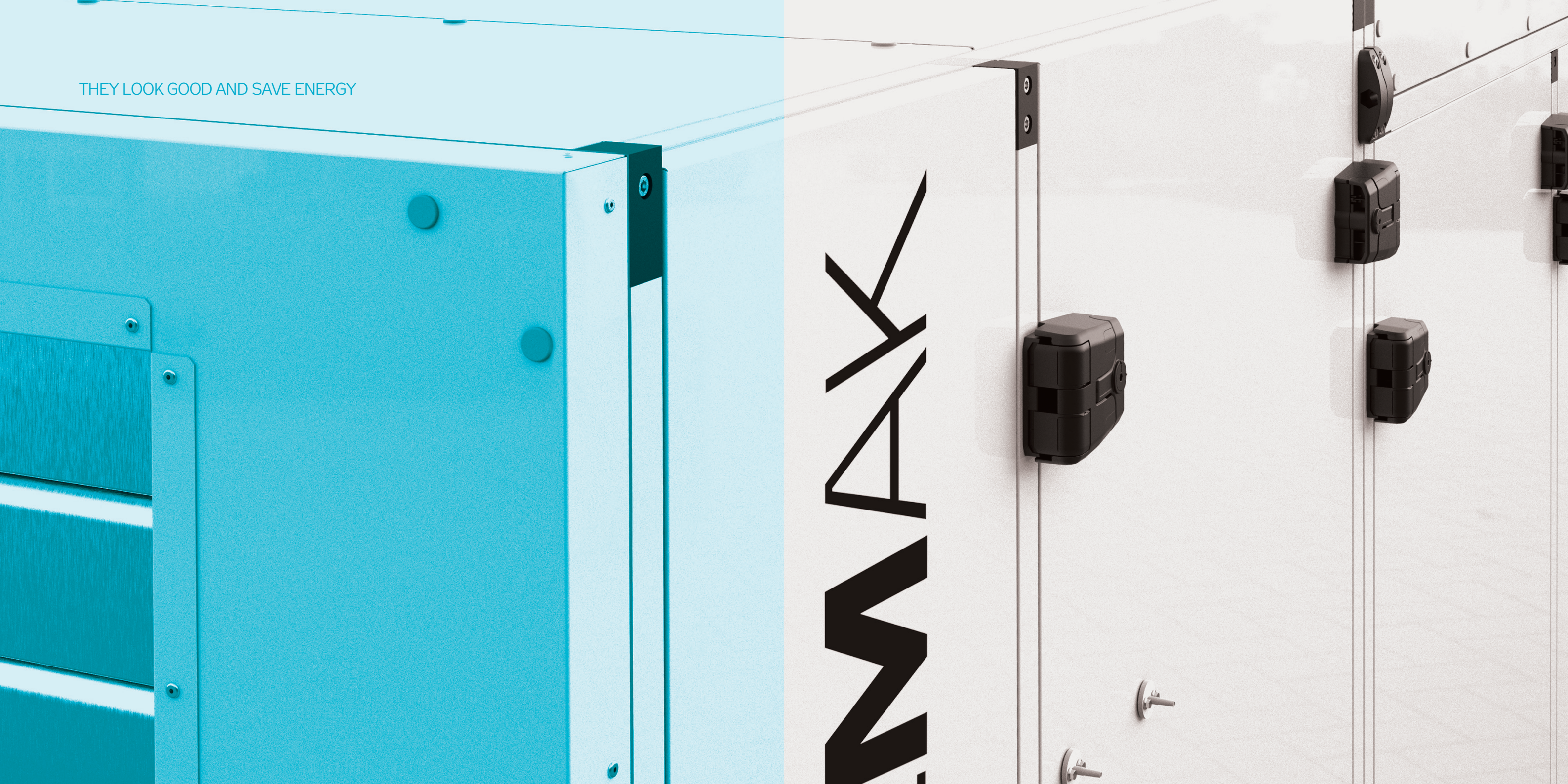


THEY CAN FIT INTO ANY BUILDING

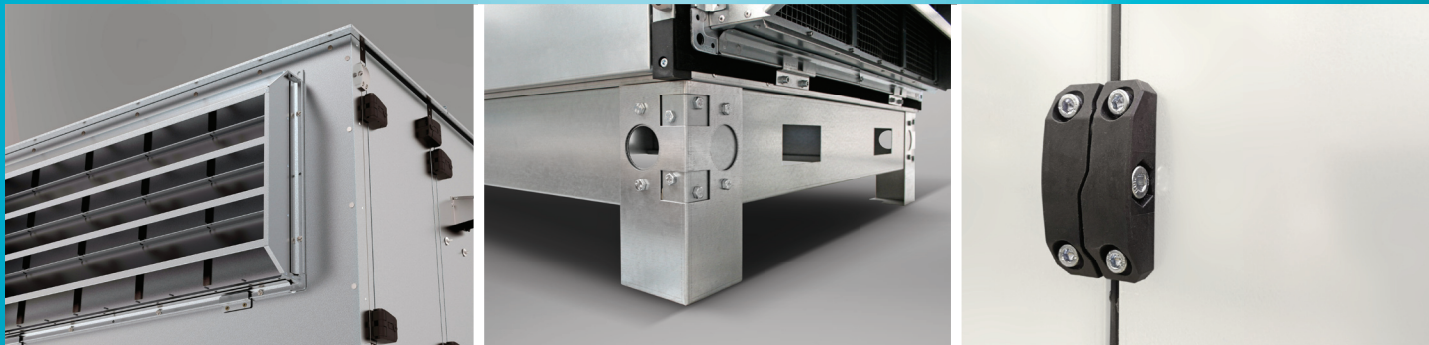
Bidirectional AHU can also be selected using two different cross-sections – e.g. supply can be square and exhaust rectangular cross-section. The total number of different combinations is virtually unlimited.



THEY LOOK GOOD AND SAVE ENERGY



THEY PROVIDE A LOT OF PRACTICAL DETAILS



SINGLE-STEP ASSEMBLY

Elastic connections, dampers, inlet and outlet louvers as well as seals between the individual transport blocks are factory-installed, which significantly reduces installation time.

LARGE BLOCKS HANDLING

The transport blocks are placed on frames with handling holes on all four sides enabling loading by a forklift truck from all directions. They are also equipped with circular openings either for handling by crane or manual manipulation using bars.

BLOCKS ASSEMBLY IN THE INACCESSIBLE PLACES

The self-aligning connections can be relocated from the unit outside to inside, which allows to place the individual blocks right next to the machine- room wall and consequently to connect the blocks. Therefore, there is no need to manipulate the entire assembled unit or help yourself with non-original couplings with the risk of paint damage and the leakage between the blocks.

THEY PROVIDE A LOT OF PRACTICAL DETAILS



SMOOTH DOOR HANDLING

Door locks allow height, longitudinal and closing force adjustment all in the range of up to 4 mm to compensate the floor unevenness. The easy door closing is also aided by the high mechanical stability of the casing and massive base frame.

THE PANELS CAN BE DISMOUNTED AGAIN AND AGAIN, WITHOUT LIMITATION

The service side casing panels are fitted using metric screws which allows repeatable disassembly.

GROMMETS AND HOSE NIPPLES FACTORY INSTALLED

The casing is equipped with factory-installed PG grommets for control cables as well as with hose nipples for connecting the airflow meter to the fans and measuring the filter's pressure loss. Therefore, there is no need to drill holes additionally into the panels.

THEY LOOK GOOD AND SAVE ENERGY



THEY PROVIDE A LOT OF PRACTICAL DETAILS



SERVICE IN CONFINED MACHINE-ROOMS

Thanks to the multifunctional locks, the door can be opened on both sides and can be completely removed. This is useful, for example, in installations where there is not enough free space in front of the unit.

REPLACEMENT OF OVERSIZED FILTERS

In case of such filter module the particular filter cells can be replaced in parts, which is highly practical when it comes to high two-storey units or confined machine-rooms. The modules have standard dimensions, which simplifies the purchase and storage of cells replacement.

CONDENSATE COLLECTION AND DRAINAGE UNDER ALL CIRCUMSTANCES

The DN 40 condensate pan side connector practically never clogs and there is no risk of damage when handling the unit. The 3D sloped pan empties quickly and completely, the edge of the pan prevents overflow even at high air speeds and pressures. A system of safety drip ledges directs the condensate drain towards the pan even in case of extreme humidity.

THEY PROVIDE A LOT OF PRACTICAL DETAILS



FULL-FLEDGED HINGES

The compression panel locks have a rear support and can therefore be tightened comfortably and thoroughly to seal the panels. There are only 4 of these hinges on a regular panel.

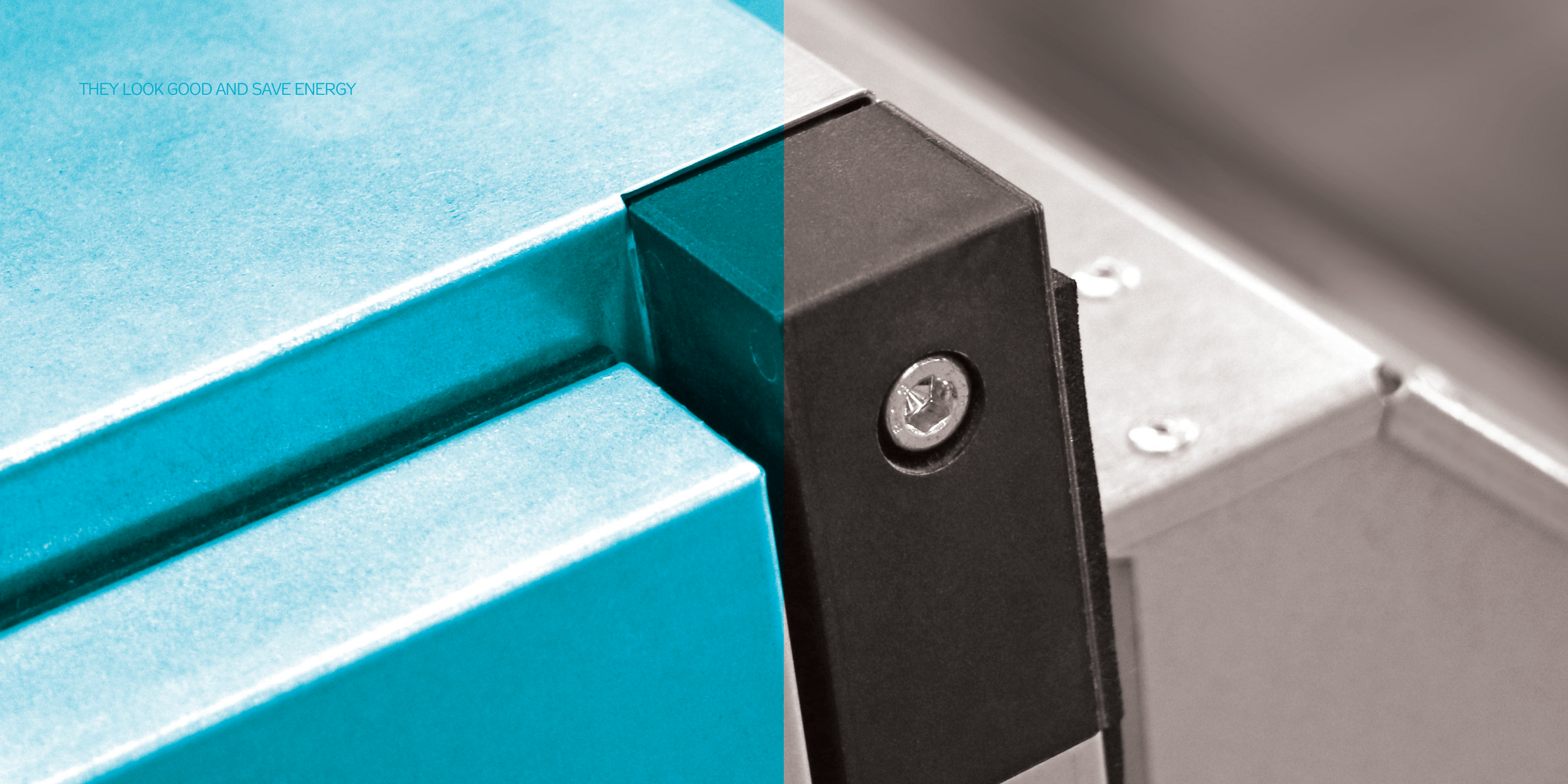
ONE PAGE SPECIFICATIONS

HVAC, electrical and sanitary designers as well as structural engineers and installers shall be fully satisfied by one clearly arranged page of documentation.

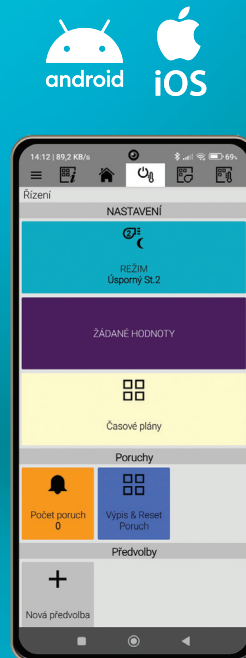
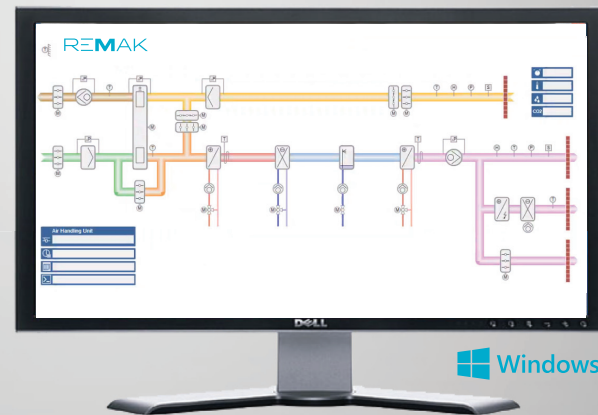
ALMOST INDESTRUCTIBLE DESIGN

Fully automated parts painting (without human touch) with nanotech based chemical pre-treatment ensures cracks, frost, peeling and blistering resistant anticorrosion surface protection. Seams are sealed by a rubber seal, highly resistant PU sealants are used on selected details only.

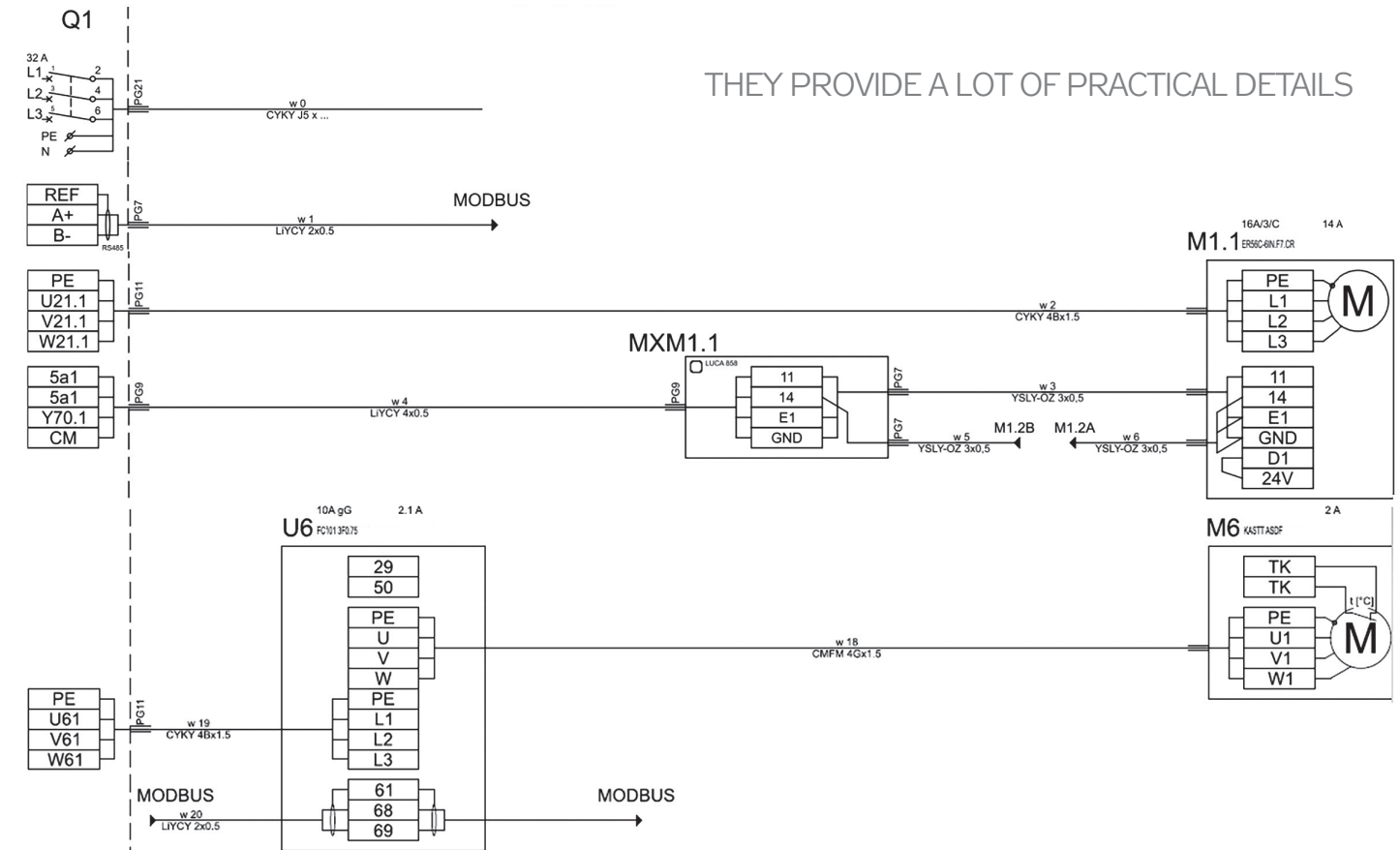
THEY LOOK GOOD AND SAVE ENERGY



The image displays two white refrigerators with their doors open. The top refrigerator is a REMAK model, featuring a control panel with several buttons and a digital display. The bottom refrigerator is a VCS model, featuring a control panel with a large dial and several buttons. Both refrigerators have multiple shelves inside.



THEY PROVIDE A LOT OF PRACTICAL DETAILS



Along with the VCS control unit we provide the complete control project i.e. wiring schemes, specification of the wire sizes, connectors assignment, drives (VFD), controllers and sensors. So there is no need to do specific and expensive control designing. The delivered components are factory preset, the unit can be put into operation by a briefed electrician.

THEY LOOK GOOD AND SAVE ENERGY



A⁺

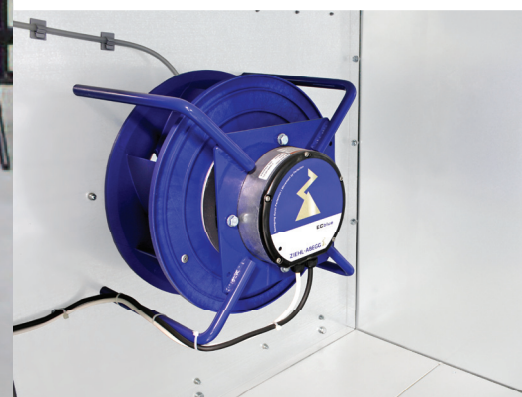


THE ONE OF THE QUIETEST ON THE MARKET

50 mm thick mineral wool insulation and perfect unit selection system provide a low sound power level of even 55 dB (A).

HYGIENIC PROVEN

Construction is completely silicone-free and its compliance with VDI 6022 hygienic requirements is laboratory verified. The units enable safe, repeatable and fast cleaning and sanitation.



REMAK

REMAK a.s.
Zuberská 2601, 756 61
Rožnov pod Radhoštěm

T +420 571 877 778
F +420 571 877 777
www.remak.eu

